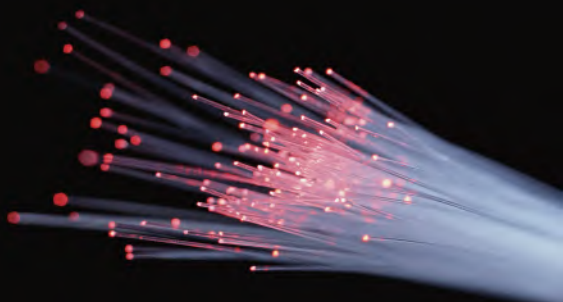


## Fan-in/Fan-out for Two-Core Fiber



### Introduction

Fan-in/fan-out device for two-core fiber is used to connect single-mode fiber and two-core fiber. The products is designed and fabricated using our patented techlogies which is suitable for both industrial and research purposes for communications and sensing application.

### Characteristics

- Low insertion loss, low crosstalk, and high return loss
- Good channel uniformity, highly reliable, and robust
- Compatible with different packaging method and interface
- Support customization for different pitches and lower loss



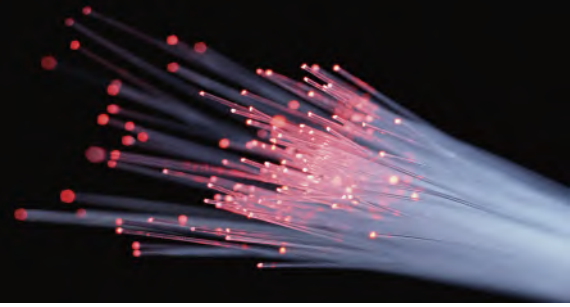
Two-core fiber

### Specification

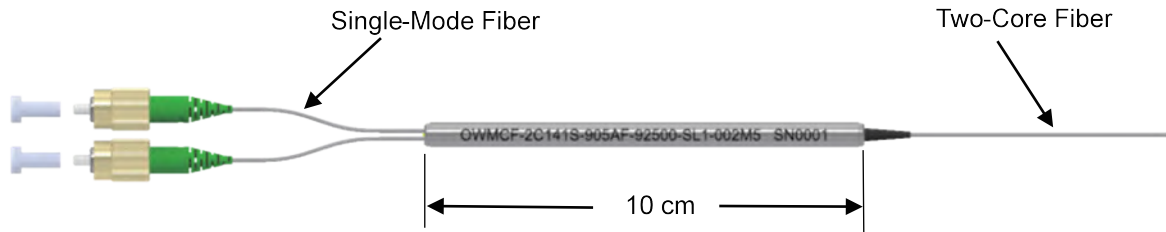
Product Name	Fan-in/Fan-out for Two-Core Fiber	
Product Code	OWMCF-2C141S-905AF-92500-SL1-002M5	
Specification	Value	Typical Value
Optical Characteristics		
Averaged Insertion Loss@1550 nm (dB)	≤1.2	1.2
Maximum Insertion Loss@1550 nm (dB)	≤1.5 or Customized	1.5
Return Loss (dB)	≥45	50
Inter-Channel Crosstalk (dB)	≤-45 or Customized	-50
Dimension Information		
Length of Multicore Fiber (m)	2.5±0.2 or Customized	2.5
Length of Single-Mode Pigtail (cm)	50±5	50
Length of Package (mm)	100±1	100
Packaging Diameter (mm)	5.6±0.1	5.6
Coating Characteristics		
Material of Coating	Acrylate or Customized	Acrylate-Based Coating
Operation Temperature (°C)	-40 ~ +70	-
Packaging Type	Steel Tube or Cartridge	Steel Tube
Connector Type	FC/APC or Customized	-



## Fan-in/Fan-out for Two-Core Fiber



### Schematic



### Ordering Information

Please use the coding system below to customize your device for best performance.

**OW MCF-2C141S-905AF-92500-SL1-002M5**

<p><b>Core Numbers</b>                  2C: 2 Core                  4C: 4 Core                  7C: 7 Core                  8C: 8 Core                  19: 19 Core                  00: Customized</p>	<p><b>002 Length of MCF (Integer Numbers)</b>  <b>M5 Length of MCF (Decimal Numbers)</b>                  E.g. 002M0: Length of MCF is 2 m                  E.g. 002M5: Length of MCF is 2.5 m                  E.g. 100M0: Length of MCF is 100 m                  E.g. 002K0: Length of MCF is 2000                  CXXXX: Customized</p>
<p><b>Diameter of MCF</b>                  1: 125 <math>\mu</math>m                  5: 150 <math>\mu</math>m                  2: 200 <math>\mu</math>m                  0: Customized</p>	<p><b>Packaging Dimension</b>                  1: 5.6 mm<math>\times</math>10 cm                  2: 5.0 mm<math>\times</math>5 cm                  3: 8 cm<math>\times</math>10 cm<math>\times</math>9 mm                  0: Customized</p>
<p><b>Core Pitch of MCF</b>                  33: 33 <math>\mu</math>m                  41: 41 <math>\mu</math>m                  42: 42 <math>\mu</math>m                  43: 43 <math>\mu</math>m                  61: 61 <math>\mu</math>m                  00: Customized</p>	<p><b>Type of Package</b>                  SL: Steel tube                  MB: Metal Box                  AB: Plastic Box                  OT: Customized</p>
<p><b>S: Single Device</b>  <b>D: A Pair of FIFO</b>                  C: Customized</p>	<p><b>Connector Type of MCF</b>                  AF: FC/APC                  UF: FC/UPC                  AS: SC/APC                  US: SC/UPC                  AL: LC/APC                  UL: LC/UPC                  00: None</p>
<p><b>Sleeve Type of SMF</b>                  B: Bared Fiber                  9: 0.9 mm Tube                  2: 2.0 mm Tube                  3: 3.0 mm Tube</p>	<p><b>Sleeved length of MCF</b>                  05: 0.5 m                  10: 1.0 m                  20: 2.0 m                  25: 2.5 m                  00: Customized</p>
<p><b>Length of SMF</b>                  05: 0.5 m                  10: 1.0 m                  00: Customized</p>	<p><b>Sleeve Type of MCF</b>                  B: Bared Fiber                  9: 0.9 mm                  2: 2.0 mm                  3: 3.0 mm                  0: Customized</p>
<p><b>Connector Type of SMF</b>                  AF: FC/APC                  UF: FC/UPC                  AS: SC/APC                  US: SC/UPC                  AL: LC/APC                  UL: LC/UPC                  00: None</p>	

