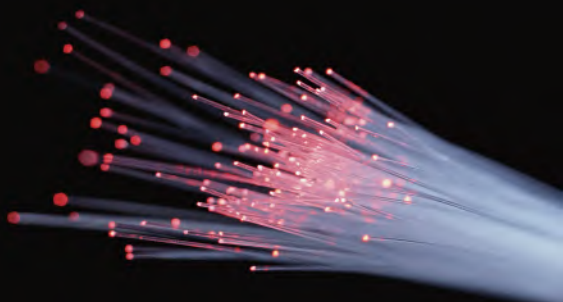
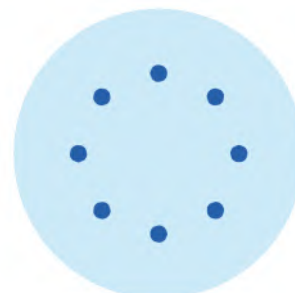


Fan-in/Fan-out for Eight-Core Fiber



Introduction

Fan-in/fan-out device for eight-core fiber is used to connect single-mode fiber and eight-core fiber. The products is designed and fabricated using our patented techlogies which is suitable for both industrial and research purposes for communications and sensing application.



Eight-core fiber

Characteristics

- Low insertion loss, low crosstalk, and high return loss
- Good channel uniformity, highly reliable, and robust
- Compatible with different packaging method and interface
- Support customization for different pitches and lower loss

Specification

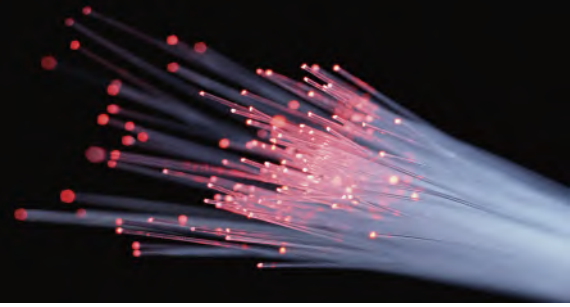
Product Name	Fan-in/Fan-out for Eight-Core Fiber	
Product Code	OWMCF-8C533S-905AF-92500-SL1-002M5	
Specification	Value	Typical Value
Optical Characteristics		
Averaged Insertion Loss@1550 nm (dB)	≤1.2	1.2
Maximum Insertion Loss@1550 nm (dB)	≤1.5 or Customized	1.5
Return Loss (dB)	≥45	50
Inter-Channel Crosstalk (dB)	≤-45 or Customized	-50
Dimension Information		
Length of Multicore Fiber (m)	2.5±0.2 or Customized	2.5
Length of Single-Mode Pigtail (cm)	50±5	50
Length of Package (mm)	100±1	100
Packaging Diameter (mm)	5.6±0.1	5.6
Coating Characteristics		
Material of Coating	Acrylate or Customized	Acrylate-Based Coating
Operation Temperature (°C)	-40 ~ +70	-
Packaging Type	Steel Tube or Cartridge	Steel Tube
Connector Type	FC/APC or Customized	-



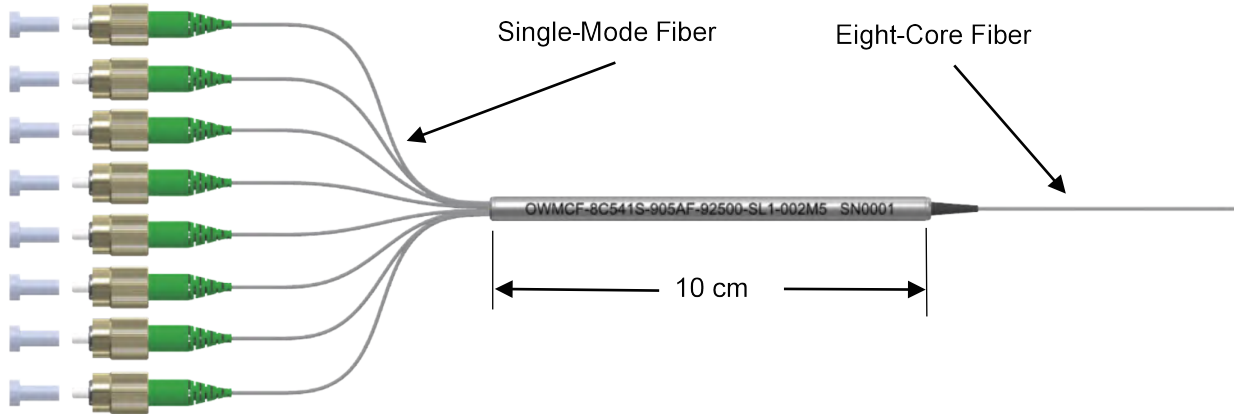
Optoweave

Weaving light for telecommunication, interconnects and sensing application

Fan-in/Fan-out for Eight-Core Fiber



Schematic



Ordering Information

Please use the coding system below to customize your device for best performance.

OW MCF-8C5 33S-9 05 AF-9 25 00-SL1-002M5

<p>Core Numbers 2C: 2 Core 4C: 4 Core 7C: 7 Core 8C: 8 Core 19: 19 Core 00: Customized</p>	<p>002 Length of MCF (Integer Numbers) M5 Length of MCF (Decimal Numbers) E.g. 002M0: Length of MCF is 2 m E.g. 002M5: Length of MCF is 2.5 m E.g. 100M0: Length of MCF is 100 m E.g. 002K0: Length of MCF is 2000 CXXXX: Customized</p>
<p>Diameter of MCF 1: 125 μm 5: 150 μm 2: 200 μm 0: Customized</p>	<p>Packaging Dimension 1: 5.6 mm×10 cm 2: 5.0 mm×5 cm 3: 8 cm×10 cm×9 mm 0: Customized</p>
<p>Core Pitch of MCF 33: 33 μm 41: 41 μm 42: 42 μm 43: 43 μm 61: 61 μm 00: Customized</p>	<p>Type of Package SL: Steel tube MB: Metal Box AB: Plastic Box OT: Customized</p>
<p>S: Single Device D: A Pair of FIFO C: Customized</p>	<p>Connector Type of MCF AF: FC/APC UF: FC/UPC AS: SC/APC US: SC/UPC AL: LC/APC UL: LC/UPC 00: None</p>
<p>Sleeve Type of SMF B: Bared Fiber 9: 0.9 mm Tube 2: 2.0 mm Tube 3: 3.0 mm Tube</p>	<p>Sleeved length of MCF 05: 0.5 m 10: 1.0 m 20: 2.0 m 25: 2.5 m 00: Customized</p>
<p>Length of SMF 05: 0.5 m 10: 1.0 m 00: Customized</p>	<p>Sleeve Type of MCF B: Bared Fiber 9: 0.9 mm 2: 2.0 mm 3: 3.0 mm 0: Customized</p>
<p>Connector Type of SMF AF: FC/APC UF: FC/UPC AS: SC/APC US: SC/UPC AL: LC/APC UL: LC/UPC 00: None</p>	

A: 3-N3308, 951 Jianchuan Road, Shanghai 200240
 E: sales@optoweave.com
 T: +86 21 52960710
 H: www.optoweave.com

